

perma STAR VARIO /
perma STAR CONTROL
max. 5 m*

perma NOVA
max. 2 m*

perma FLEX
max. 2 m*

perma FUTURA
max. 1 m*

perma CLASSIC
max. 1 m*

Art. No. 104862

Art. No. 101427

Art. No. 109685

Art. No. 109420

Art. No. 104862

Art. No. 109663

< +80 °C

Art. No.
101391

Art. No.
104822

Art. No.
101496

Art. No.
101497

Art. No.
101393

Art. No.
101496

Art. No.
104822

Art. No.
101391

Art. No.
101497

< +260 °C

Art. No.
104867

Art. No.
101394

Art. No.
104867

< +100 °C

Art. No.
101554

Art. No.
101555

Art. No.
101554

< +260 °C

Art. No.
104868

500 mm
Art. No.
113864

1000 mm
Art. No.
101549

1500 mm
Art. No.
101550

Art. No.
104868

Art. No.
104863

Art. No.
104889

Art. No.
104862

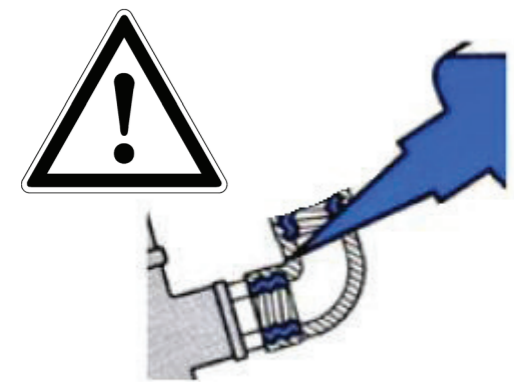
Art. No.
104864

Art. No.
101396

Art. No.
101397

Art. No.
101402

Art. No.
101405



All metal to metal connections must
be glued together with Loctite® 243™
[Art. No. 110278].

* depending on lubricant and ambient temperature

Scale:	Date:	Material:	Description:
Size:	27.08.2015	Revision / drawn:	Part No.
A1	B / sbr		



Support flanges

- 101427 Support flange FLEX Gen 2.0 G1/4 male x G1/4 female (brass / plastic)
- 109420 Support flange STAR Gen 2.0 G1/4 male x G1/4 female (brass / plastic)

Mounting Brackets

- 109685 Mounting Bracket CLASSIC, FUTURA, FLEX, NOVA 1-point G1/4 female (stainless steel)
- 109663 Mounting Bracket STAR Standard Duty 1-point G1/4 female (stainless steel)

Tube up +80 °C

- 101393 Tube up to +80 °C oØ 8 mm x iØ 6 mm (PA)
- 101391 Tube connector G1/4 male for tube oØ 8 mm (alu / plastic)
- 104822 Tube connector G1/4 male for tube oØ 8 mm (brass)
- 101496 Tube connector G1/4 male for tube oØ 8 mm straight (brass, nickel-plated)
- 101497 Tube connector G1/4 male for tube oØ 8 mm 90° - rotary type (brass, nickel-plated)

Tube up to +260 °C

- 101394 Tube up to +260 °C oØ 8 mm x iØ 6 mm (PTFE)
- 104867 Tube connector G1/4 male for tube oØ 8 mm (stainless steel)

Heavy Duty hose up to +100 °C

- 101555 Heavy Duty hose up to +100 °C oØ 16 mm x iØ 9.5 mm (with NBR lining and fabric insert)
- 101554 Hose connector G1/4 male for hose iØ 9.5 mm - push-lock (steel, zinc-plated)

Tube up to +260 °C

- 113864 Tube up to +260 °C oØ 12 mm x iØ 8 mm 500 mm (PTFE / stainless steel)
- 101549 Tube up to +260 °C oØ 12 mm x iØ 8 mm 1000 mm (PTFE / stainless steel)
- 101550 Tube up to +260 °C oØ 12 mm x iØ 8 mm 1500 mm (PTFE / stainless steel)
- 104868 Cutting ring coupling R1/4 male for oØ 8 mm straight (stainless steel)

Oil retaining valves

- 104862 Oil retaining valve G1/4 male x G1/4 female up to +60 °C (brass with plastic valve)
- 104889 Oil retaining valve G1/4 male x G1/4 female up to +60 °C (stainless steel with plastic valve)
- 104863 Oil retaining valve G1/4 male x G1/4 female up to +150 °C (brass with metal valve)
- 104864 Bracket (stainless steel)

Oil brushes

- 101396 Oil brush Ø20 mm G1/4 female
- 101397 Oil brush 40 x 30 mm G1/4 female thread on top (horsehair bristles for temperatures up to +80 °C)
- 101402 Oil brush 40 x 30 mm G1/4 female thread on top (PPS bristles for temperatures up to +180 °C)
- 101405 Oil brush 40 x 30 mm G1/4 female thread on top (steel bristles for temperatures up to +350 °C)

All metal to metal connections must be glued together with Loctite® 243™ (Art. No. 110278).

For more connecting parts please see our perma catalog at www.perma-tec.com

perma STAR VARIO /
perma STAR CONTROL
max. 5 m*

perma NOVA
max. 2 m*

perma FLEX
max. 2 m*

perma FUTURA
max. 1 m*

perma CLASSIC
max. 1 m*

Art. No. 104862

Art. No. 101427

Art. No. 109685

Art. No. 109420

Art. No. 104862

Art. No. 109663

< +80 °C

Art. No.
101391

Art. No.
104822

Art. No.
101496

Art. No.
101497

Art. No.
101393

Art. No.
101496

Art. No.
104822

Art. No.
101391

Art. No.
101497

< +260 °C

Art. No.
104867

Art. No.
101394

Art. No.
104867

Art. No.
104862

< +100 °C

Art. No.
101554

Art. No.
101555

Art. No.
101554

Art. No.
104863

Art. No.
104889

< +260 °C

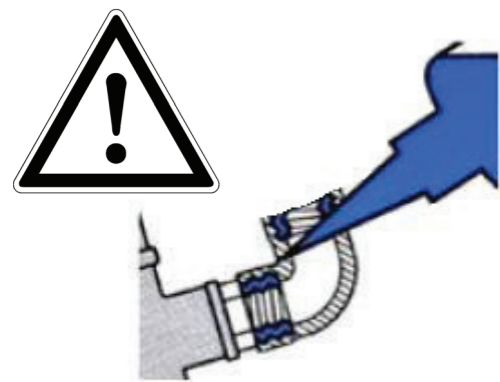
Art. No.
104868

500 mm
Art. No.
113864

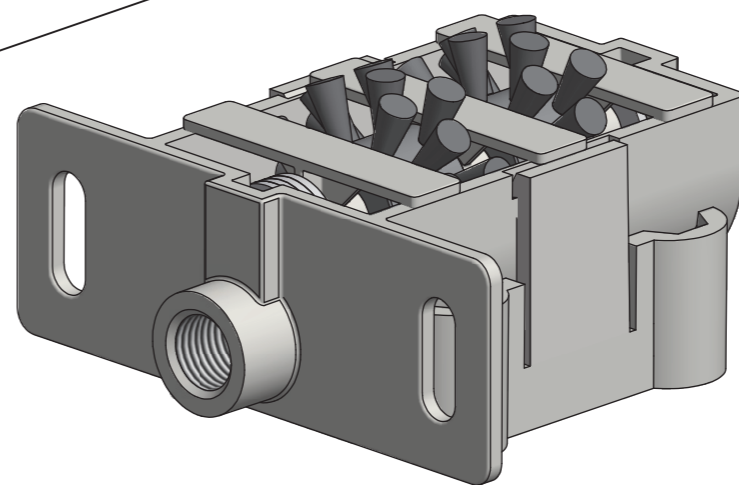
1000 mm
Art. No.
101549

1500 mm
Art. No.
101550

Art. No.
104868



All metal to metal connections must
be glued together with Loctite® 243™
(Art. No. 110278).



Art. No.
101445

* depending on lubricant and ambient temperature

Scale:	Date:	Material:	Description:
Size:	Revision / drawn:	Part No.	
A1	B / sbr		



Support flanges

- 101427 Support flange FLEX Gen 2.0 G1/4 male x G1/4 female (brass / plastic)
- 109420 Support flange STAR Gen 2.0 G1/4 male x G1/4 female (brass / plastic)

Mounting Brackets

- 109685 Mounting Bracket CLASSIC, FUTURA, FLEX, NOVA 1-point G1/4 female (stainless steel)
- 109663 Mounting Bracket STAR Standard Duty 1-point G1/4 female (stainless steel)

Tube up +80 °C

- 101393 Tube up to +80 °C oØ 8 mm x iØ 6 mm (PA)
- 101391 Tube connector G1/4 male for tube oØ 8 mm (alu / plastic)
- 104822 Tube connector G1/4 male for tube oØ 8 mm (brass)
- 101496 Tube connector G1/4 male for tube oØ 8 mm straight (brass, nickel-plated)
- 101497 Tube connector G1/4 male for tube oØ 8 mm 90° - rotary type (brass, nickel-plated)

Tube up to +260 °C

- 101394 Tube up to +260 °C oØ 8 mm x iØ 6 mm (PTFE)
- 104867 Tube connector G1/4 male for tube oØ 8 mm (stainless steel)

Heavy Duty hose up to +100 °C

- 101555 Heavy Duty hose up to +100 °C oØ 16 mm x iØ 9.5 mm (with NBR lining and fabric insert)
- 101554 Hose connector G1/4 male for hose iØ 9.5 mm - push-lock (steel, zinc-plated)

Tube up to +260 °C

- 113864 Tube up to +260 °C oØ 12 mm x iØ 8 mm 500 mm (PTFE / stainless steel)
- 101549 Tube up to +260 °C oØ 12 mm x iØ 8 mm 1000 mm (PTFE / stainless steel)
- 101550 Tube up to +260 °C oØ 12 mm x iØ 8 mm 1500 mm (PTFE / stainless steel)
- 104868 Cutting ring coupling R1/4 male for oØ 8 mm straight (stainless steel)

Oil retaining valves

- 104862 Oil retaining valve G1/4 male x G1/4 female up to +60 °C (brass with plastic valve)
- 104889 Oil retaining valve G1/4 male x G1/4 female up to +60 °C (stainless steel with plastic valve)
- 104863 Oil retaining valve G1/4 male x G1/4 female up to +150 °C (brass with metal valve)

Chain lubrication box

- 101445 Multipurpose chain lubrication box (plastic)

All metal to metal connections must be glued together with Loctite® 243™ (Art. No. 110278).

For more connecting parts please see our perma catalog at www.perma-tec.com